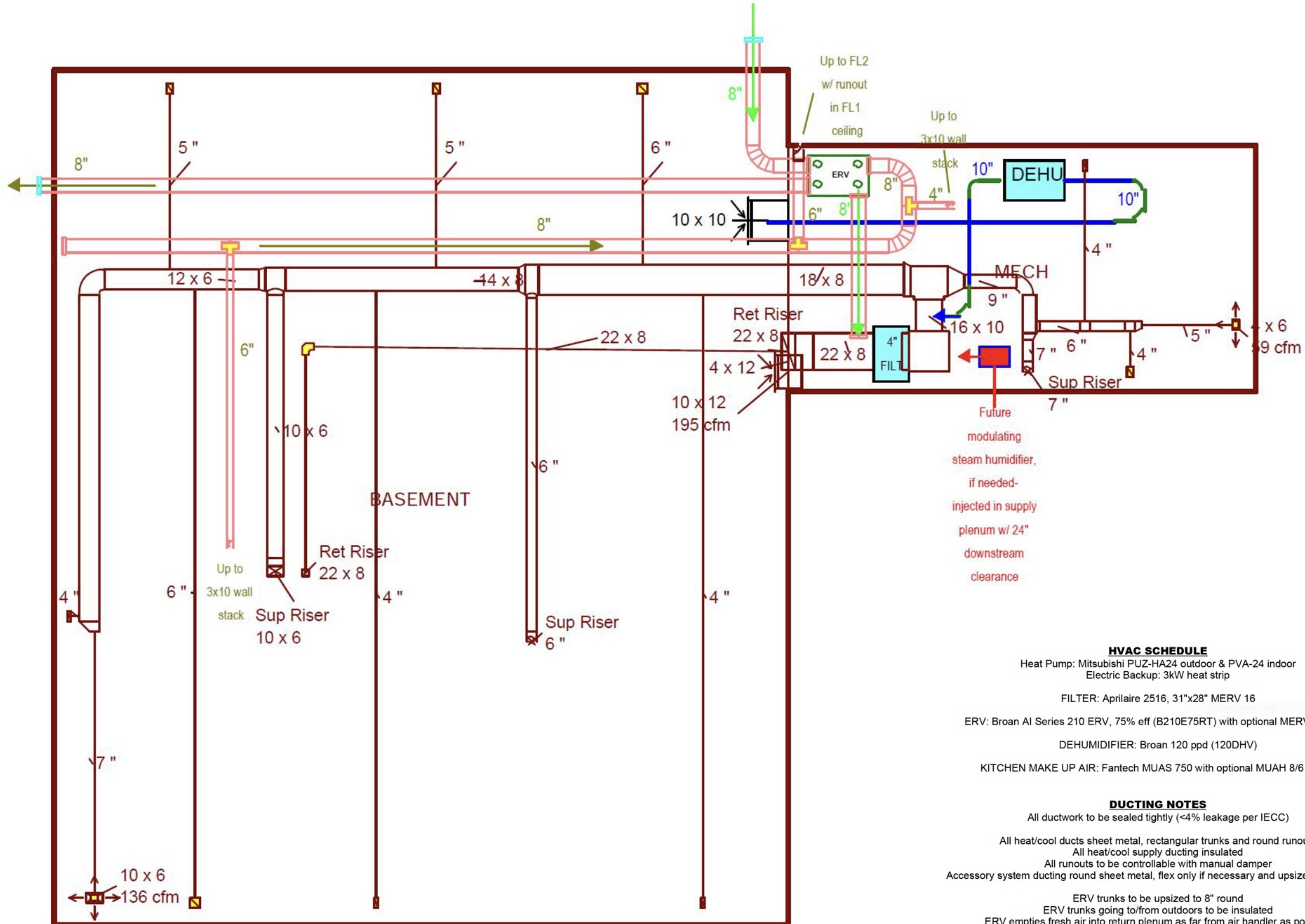


# BSMT



**HVAC SCHEDULE**  
 Heat Pump: Mitsubishi PUZ-HA24 outdoor & PVA-24 indoor  
 Electric Backup: 3kW heat strip

FILTER: Aprilaire 2516, 31"x28" MERV 16

ERV: Broan AI Series 210 ERV, 75% eff (B210E75RT) with optional MERV 13 filters

DEHUMIDIFIER: Broan 120 ppd (120DHV)


KITCHEN MAKE UP AIR: Fantech MUAS 750 with optional MUAH 8/6 heater

**DUCTING NOTES**  
 All ductwork to be sealed tightly (<4% leakage per IECC)

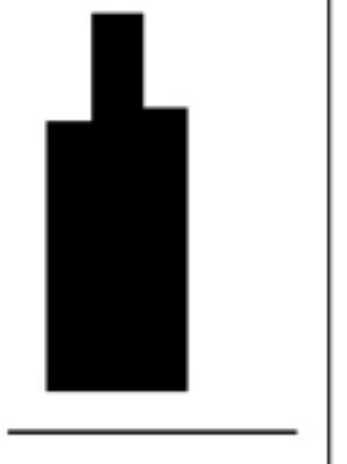
All heat/cool ducts sheet metal, rectangular trunks and round runouts  
 All heat/cool supply ducting insulated  
 All runouts to be controllable with manual damper  
 Accessory system ducting round sheet metal, flex only if necessary and upsized by one step

ERV trunks to be upsized to 8" round  
 ERV trunks going to/from outdoors to be insulated  
 ERV empties fresh air into return plenum as far from air handler as possible  
 ERV exhaust grilles Fantech MGE4 or equivalent

DEHU empties dry air into supply plenum of air handler, with butterfly damper  
 MAKE UP AIR configured via testing at setup, duct insulated after heater unit



**BUILDING PERFORMANCE WORKSHOP LLC**  
 ATLANTA, GA  
 BUILDINGPERFORMANCEWORKSHOP.COM



**ISSUE**  
JAN 30 2024

**RE-ISSUE**

**PROJECT NO.**  
2024.01.30

**DESIGNED BY**  
CORBETT LUNSFORD

**DESCRIPTION**  
COMBINED HVAC

M

01

